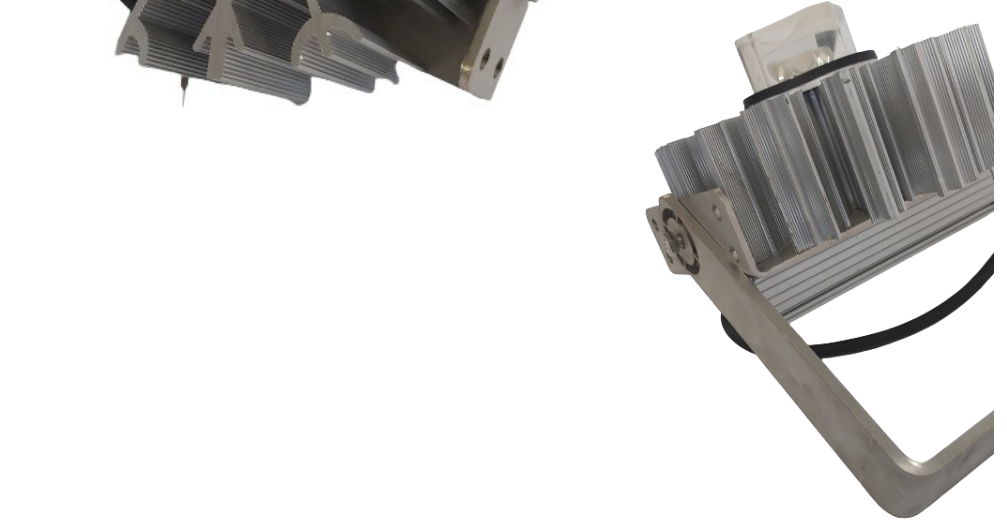




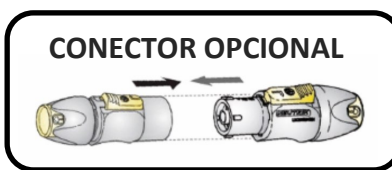
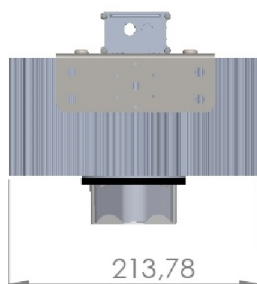
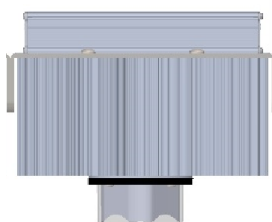
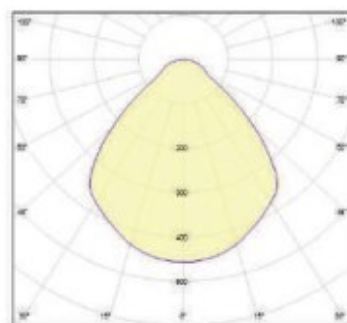
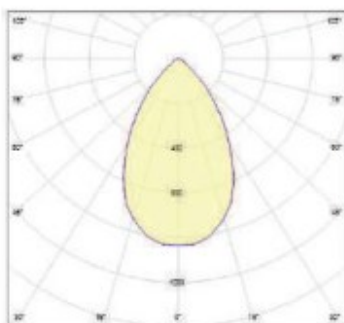
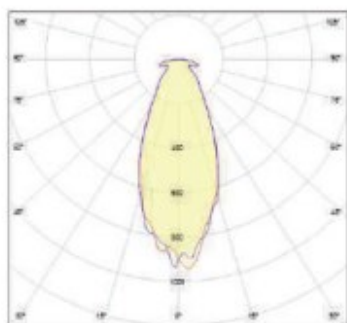
GPKLED

FOP.130VE29



55°

	FOP.130VE29A 3500K	FOP.130VE29B 4000K	FOP.130VE 29C 5000K
CONSUMO	130 W	130 W	130 W
VIDA UTIL	70.000h	70.000h	70.000h
TIPO DE CHIP LED	Vero 29 Bridgelux	Vero 29 Bridgelux	Vero 29 Bridgelux
MATERIALES	Aluminio	Aluminio	Aluminio
DRIVER	EUR-240	EUR-240	EUR-240
LENTES LEDIL	38º 69º 103º	38º 69º 103º	38º 69º 103º
Tª DE COLOR	3500K	4000K	5000K
LUMENES	19.500 lm	20.150 lm	20.800 lm
EFICIENCIA LUMINICA	150 lm/w	155 lm/w	160 lm/w
CRI	80	80	70
FACTOR POTENCIA	0,97	0,97	0,97
REGULACION	1-10v, DALI	1-10v, DALI	1-10v, DALI
Tª DE TRABAJO	-25º a 50º C	-25º a 50º C	-25º a 50º C
PESO	4Kg	4Kg	4Kg
IP	IP67	IP67	IP67



ARCHIVOS FOTOMETRICOS IES, LDT, OXL

